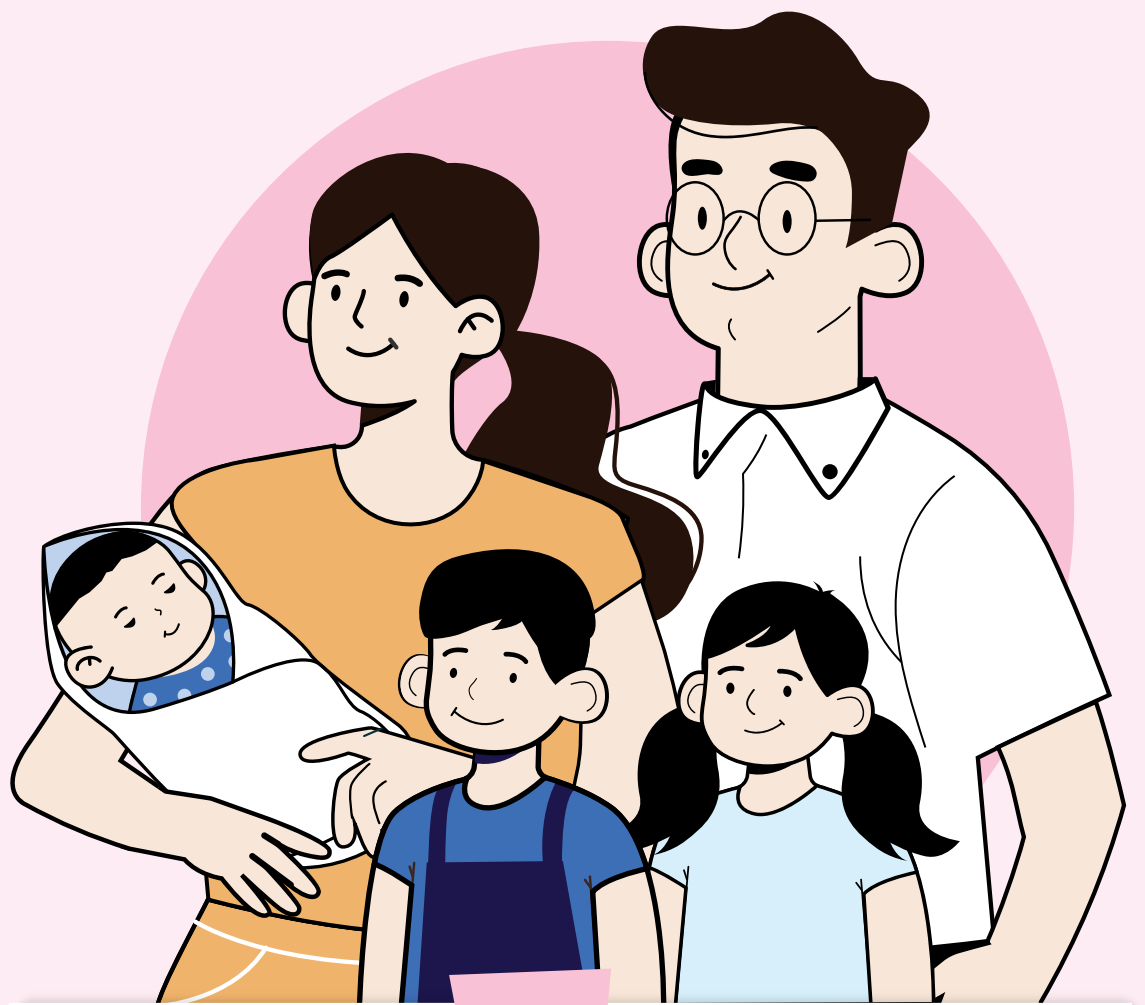


# SUPPORT FOR YOUNG FAMILIES



## JULY 2025

- **\$500 in Child LifeSG Credits (CLC)** for each Singapore Citizen (SC) child aged 1 – 12\* in 2025
- **\$500 top-up to Edusave Account or Post-Secondary Education Account (PSEA)** of each SC child aged 13 – 20 in 2025

\* Families with eligible children born in 2025 will receive the CLC in April 2026.

## SEPTEMBER 2025

- **\$1,000 in Large Family LifeSG Credits (LFLC) annually** for each third and subsequent SC child in the years that the child turns 1 to 6

## YOU WILL BE NOTIFIED VIA SMS

- CLC and LFLC will be disbursed to the Child Development Account (CDA) trustee of each eligible child via the digital wallet on LifeSG
- No further action needed.



More info at  
[go.gov.sg/supportforyou](https://go.gov.sg/supportforyou)